

Email Password Change for CommNet Users

1.) Go to <http://www.esc6.net> and click on *Check E-mail* at the near top right corner of web page.



Education Service Center Region VI - Microsoft Internet Explorer

Address: <http://www.esc6.net/>

Education Service Center
REGION VI
Contact Us | 936-435-8400

Programs & Services Menu

Check E-mail | Intranet | Help

Welcome to Region VI [Online Event Catalog](#)
The Source

Main Menu

- Home Page
- About ESC VI
- Employment
- Events & Training
- Programs & Services
- Staff Directory & Departments
- Resources**
- Assessment and Accountability
- Core Curriculum & Content Areas
- Discussion Board
- Federal / State Announcements
- Publications
- Schedules & Calendars
- Teacher Certification

Wkls, Blogs, & Moodle
A team from ESC Region VI attended Alan November's Summer Conference, Building Learning Communities, in Boston Mass. ESC Region VI Staff from... [More >>](#)

Region VI Tools

- Media Reservation System
- Coop. Store & Vendor Info
- School District Web Sites
- School District Directories

Federal / State Announcements [View All >>](#)

- ePlan and STAAR Chart Migrations
- Important Federal Title Program Updates
- SBEC - Temporary Teacher Certificate Approved
- Texas Public School Nutrition Policy, Revised
- Special Education Monitoring Process
- How to Find Research-Based Interventions

Featured Summer 2004 Events [View All >>](#)

- Instructional and Management Toolbox for a Differentiated Classroom (Day 4) Non-Members
- Proactively Preventing Problems and Promoting Learning
- [Summer 2004 Training & Events Search >>](#)

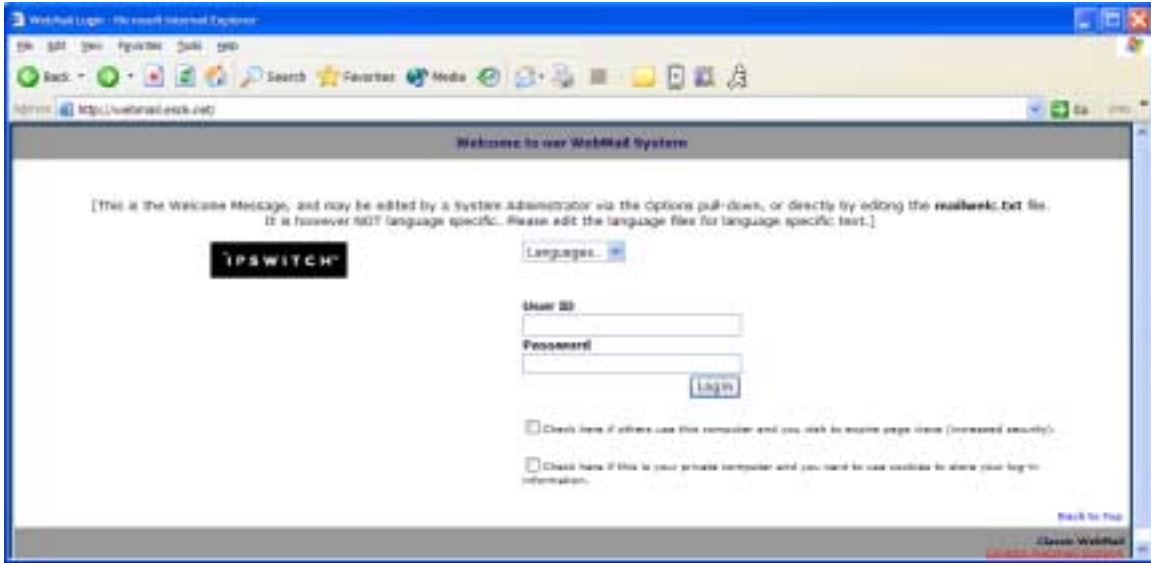
Schedules & Calendars

- Special Education Calendar
- Federal Programs Timeline
- PERMS Reporting Schedule
- Blue Streak Schedule

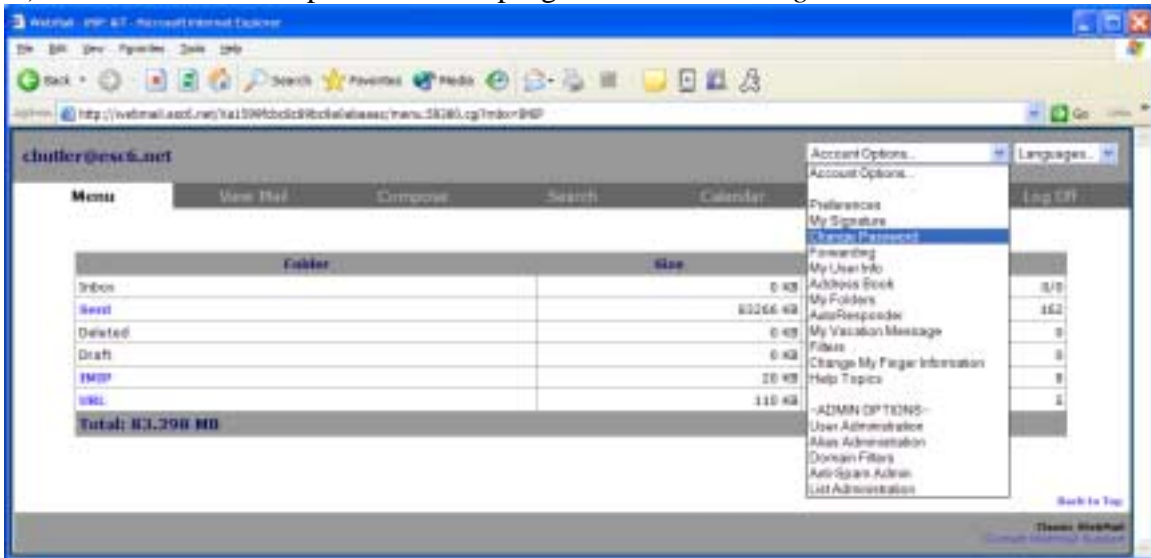
Employment Opportunities

- Education Service Center Region VI Employment
- Teacher & Administrator Employment
- Submit Your Qualifications


- 2.) Enter login information and click *Logon*.
(ie User ID at this point will look like jdoo@jonesid.net password will be whatever password you have set or the default)



- 3.) Click on the drop down near top right and select *Change Password*.

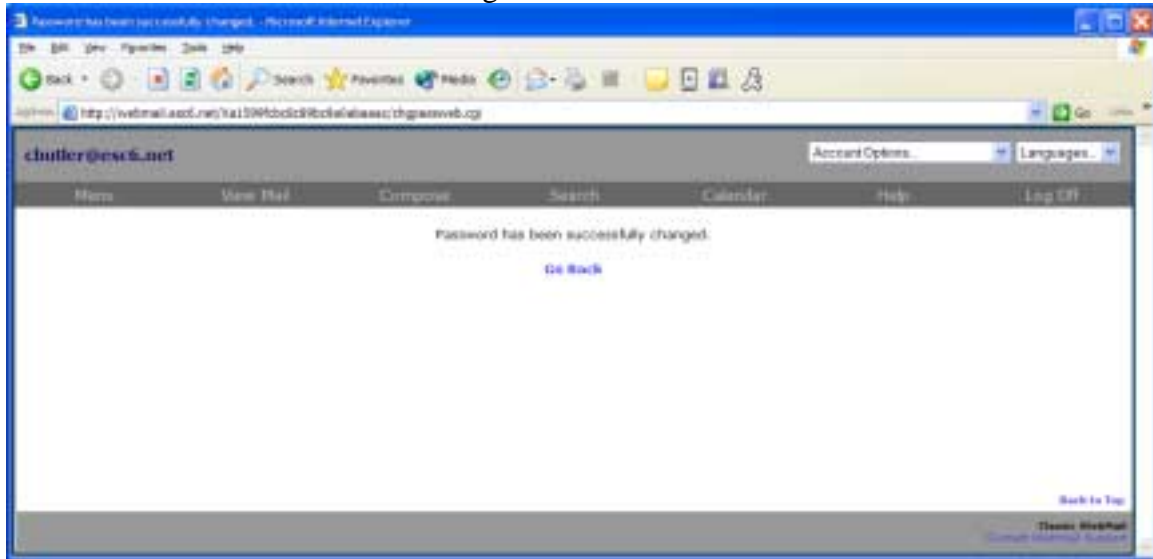


4.) Type in old password and the new password and click *Save*.



The screenshot shows a Microsoft Internet Explorer browser window displaying a password change page for an email account. The browser's address bar shows a URL starting with 'http://webmail.ascc.net/'. The page header includes the email address 'chuller@esc6.net' and navigation links for 'Home', 'View Mail', 'Compose', 'Search', 'Calendar', 'Help', and 'Log Off'. Below the header, there is a 'Go Back' link and a note: 'Passwords may be from 3 to 30 characters long and cannot contain spaces.' The form contains three input fields: 'Old Password:', 'New Password:', and 'Confirm Password:'. A 'Save' button is located to the right of the 'Confirm Password' field. At the bottom right of the page, there are links for 'Back to Top' and 'Home WebMail'.

5. Should receive success message



6. Password is now changed!